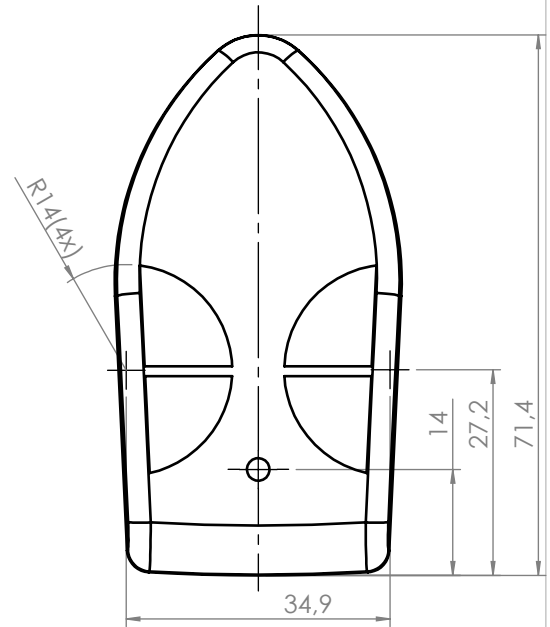
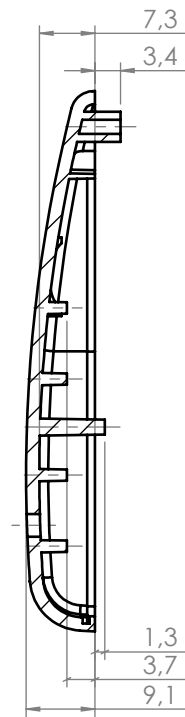
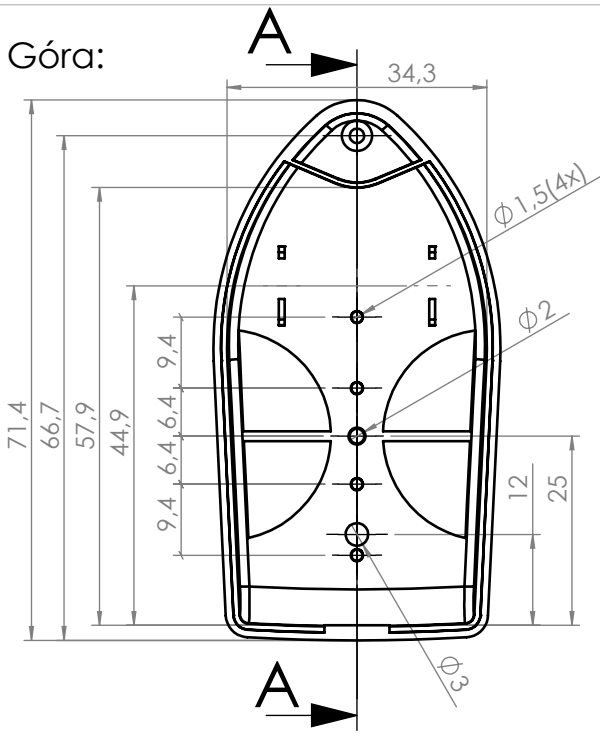
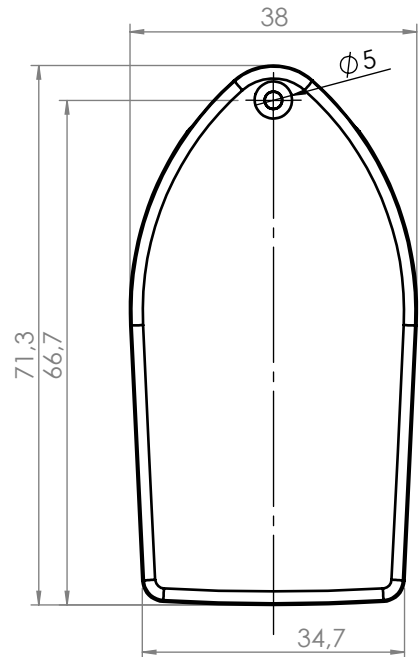
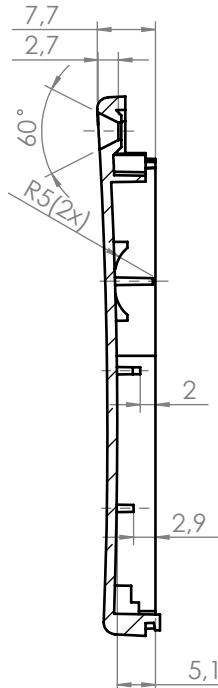
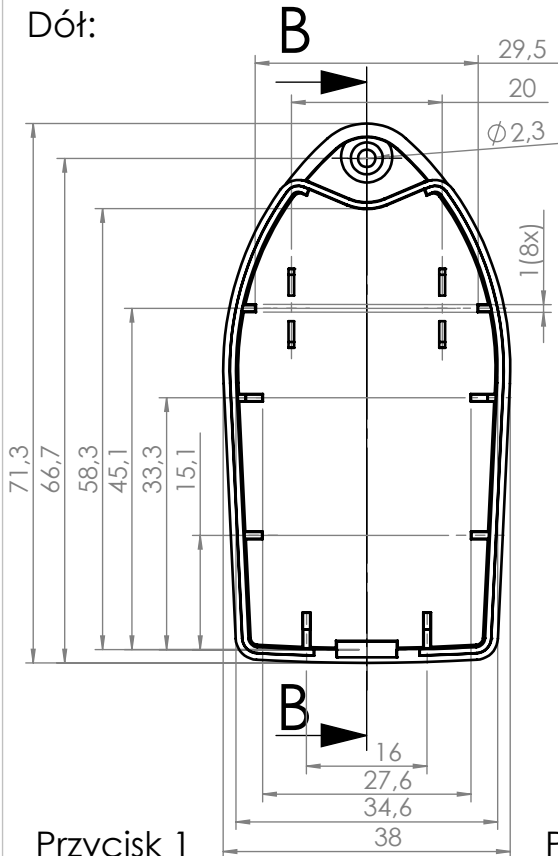


Góra:



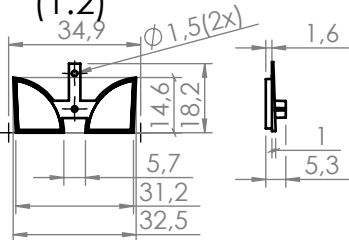
PRZEKRÓJ A-A

Dół:

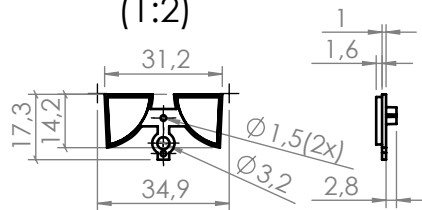


PRZEKRÓJ B-B

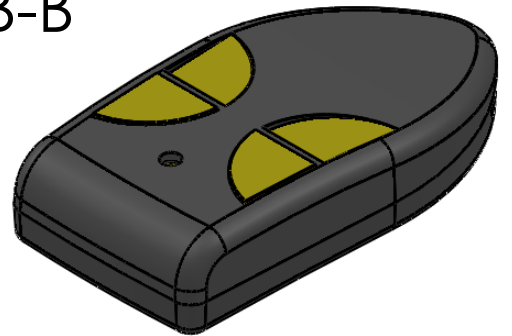
Przycisk 1
(1:2)



Przycisk 2
(1:2)



UWAGA: Wymiary w tolerancji $\pm 0,5\text{mm}$



maxPCB: 38mm x 30mm

Elementy składowe:

- góra,
- dół,
- przycisk 1,
- przycisk 2,
- wkręt,

Format

A4

Skala

1:1

Nr produktu

P-3



MASZCZYK

Maszczyk
05-071 Sulejówek-Miłosna
ul. Mickiewicza 10
tel.: (022)783 45 20, fax.: (022)783 90 85
kom: 0602 726 086